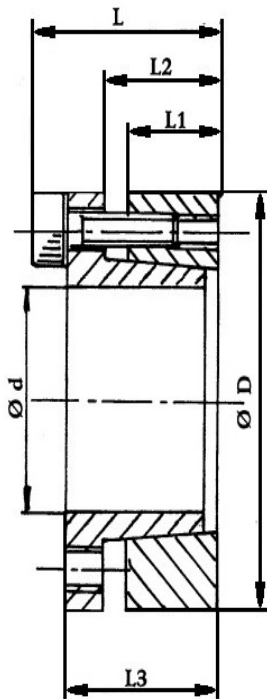


Tuleje zaciskowe RCK 13



Tuleja zaciskowa RCK 13

Symbol	Ød	ØD	L1	L2	L3	L	przenoszony moment Nm	naciski		ilość	śruby kl. 12.9		śruby luźujące	
								wał N/mm ²	piasta N/mm ²		moment dokręcania Nm	ilość	typ	
														typ
RCK13 18/47	18	47	17	22	28	34	310	314	120	5	M6x20	14	3	M6
RCK13 19/47	19	47	17	22	28	34	330	300	120	5	M6x20	14	3	M6
RCK13 20/47	20	47	17	22	28	34	380	295	125	5	M6x20	14	3	M6
RCK13 22/47	22	47	17	22	28	34	410	270	125	5	M6x20	14	3	M6
RCK13 24/50	24	50	17	22	28	34	440	243	120	6	M6x20	14	3	M6
RCK13 25/50	25	50	17	22	28	34	560	285	140	6	M6x20	14	3	M6

RCK13 28/55	28	55	17	22	28	34	630	255	130	6	M6x20	14	3	M6
RCK13 30/55	30	55	17	22	28	34	660	235	130	6	M6x20	14	3	M6
RCK13 32/60	32	60	17	22	28	34	960	295	155	8	M6x20	14	4	M6
RCK13 35/60	35	60	17	22	28	34	1050	270	155	8	M6x20	14	4	M6
RCK13 38/65	38	65	17	22	28	34	11440	250	145	8	M6x20	14	4	M6
RCK13 40/65	40	65	17	22	28	34	1200	235	145	8	M6x20	14	4	M6
RCK13 45/75	45	75	20	25	33	41	2180	290	170	7	M8x25	35	3	M8
RCK13 50/80	50	80	20	25	33	41	2430	260	160	7	M8x25	35	3	M8
RCK13 55/85	55	85	20	25	33	41	3070	270	175	8	M8x25	35	4	M8
RCK13 60/90	60	90	20	25	33	41	3350	245	165	8	M8x25	35	4	M8
RCK13 65/95	65	95	20	25	33	41	4080	255	175	9	M8x25	35	3	M8
RCK13 70/110	70	110	24	30	40	50	6280	280	180	8	M10x30	70	4	M10
RCK13 75/115	75	115	24	30	40	50	6680	260	170	8	M10x30	70	4	M10
RCK13 80/120	80	120	24	30	40	50	7130	250	160	8	M10x30	70	4	M10
RCK13 85/125	85	125	24	30	40	50	8480	260	180	9	M10x30	70	3	M10
RCK13 90/130	90	130	24	30	40	50	9080	250	170	9	M10x30	70	3	M10
RCK13 95/135	95	135	24	30	40	50	10580	260	180	10	M10x30	70	4	M10
RCK13 100/145	100	145	26	32	44	56	13380	270	190	8	M12x35	125	4	M12
RCK13 110/155	110	155	26	32	44	56	14580	240	180	8	M12x35	125	4	M12
RCK13 120/165	120	165	26	32	44	56	17880	250	180	9	M12x35	125	4	M12

RCK13 130/180	130	180	34	40	52	64	29980	240	170	12	M12x35	125	6	M12
RCK13 140/190	140	190	34	40	54	68	26980	210	150	9	M14x40	190	4	M14
RCK13 150/200	150	200	34	40	54	68	32980	230	170	10	M14x40	190	5	M14
RCK13 160/210	160	210	34	40	54	68	37980	230	170	11	M14x40	190	4	M14
RCK13 170/225	170	225	44	50	64	78	44980	180	130	12	M14x40	190	6	M14
RCK13 180/235	180	235	44	50	64	78	46980	170	130	12	M14x40	190	5	M14

* - Informacje zawarte w tabeli są informacjami poglądowymi, za które firma DORMET nie odpowiada.